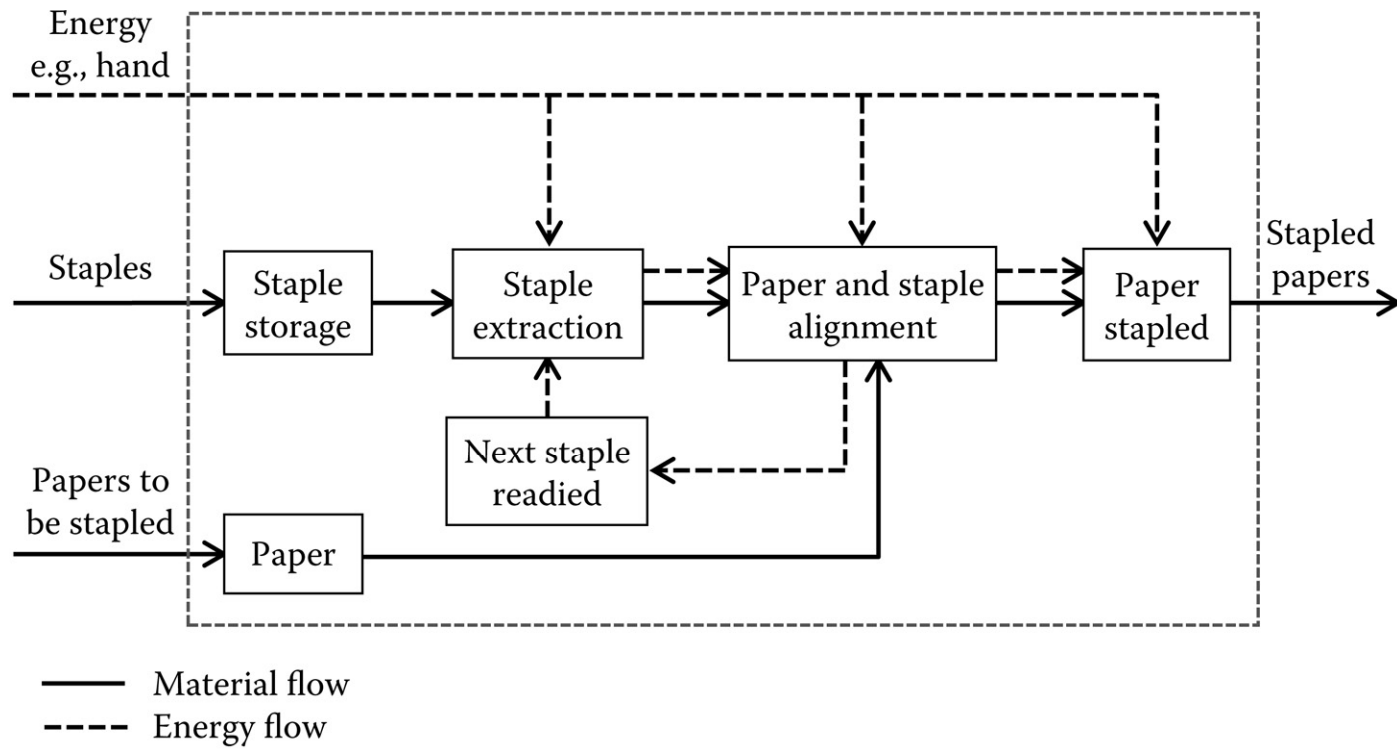


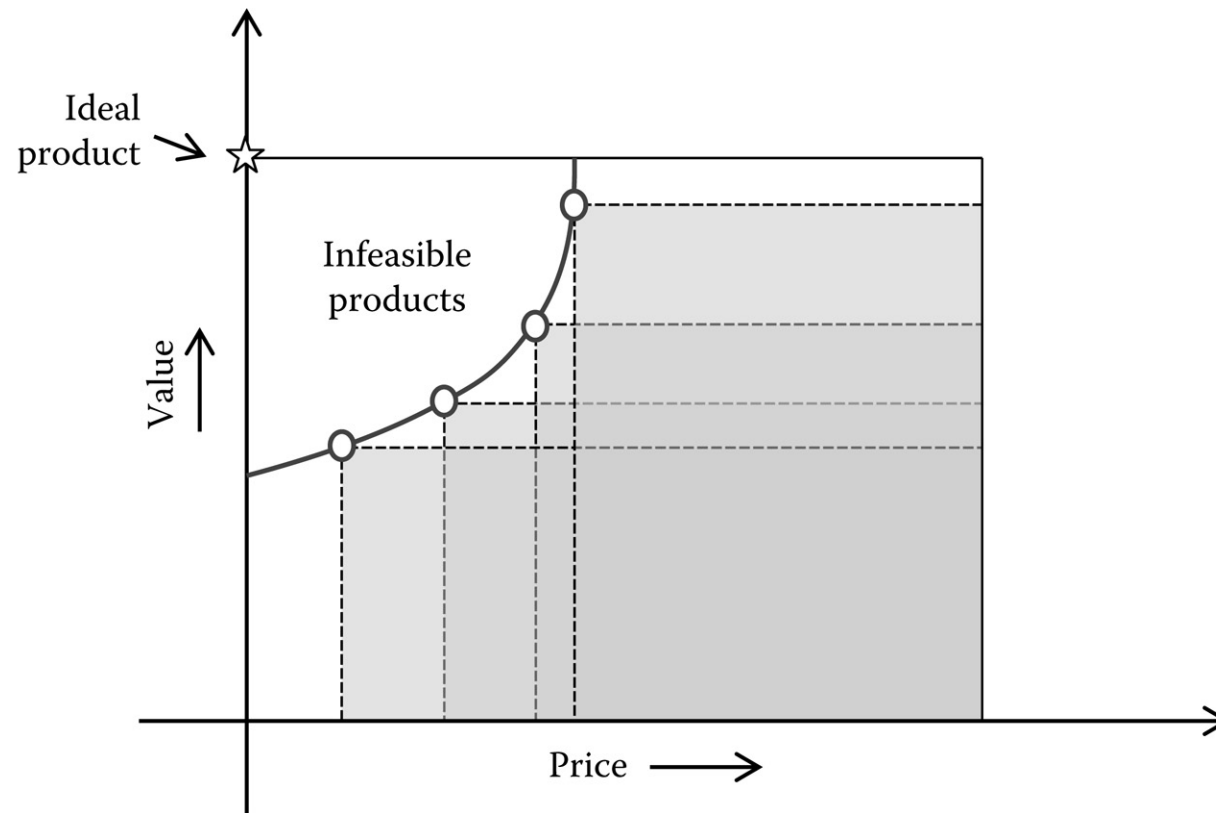
# Decision Based Design

## 2 Engineering Design



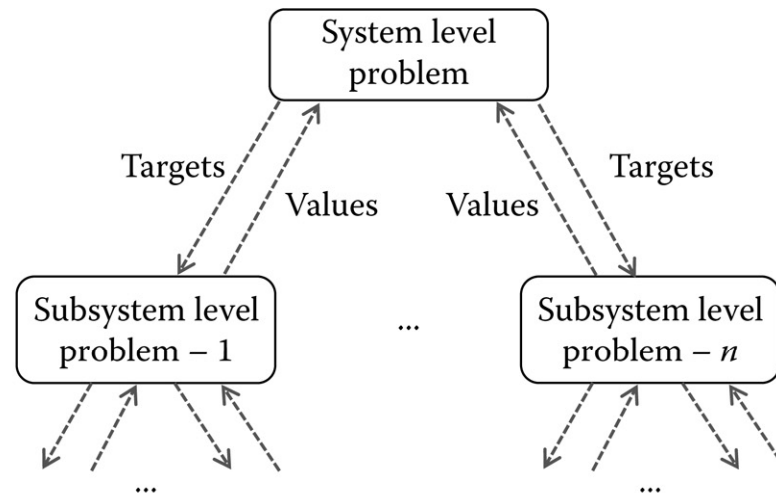
**FIGURE 2.1**

An example of a functional diagram for a simple stapler.



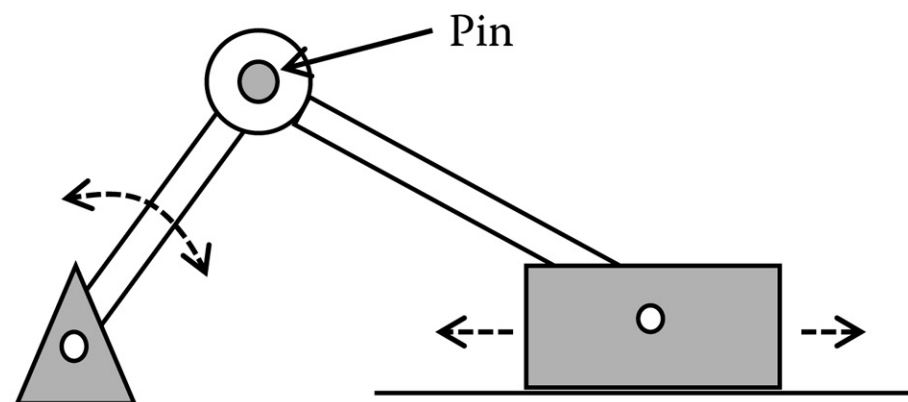
**FIGURE 2.2**

A simplistic representation of how multiple products can capture most of the demand.



**FIGURE 2.3**

Multilevel target-based design. Higher-level problems pass targets to lower-level subsystem design problems, while lower-level problems return variable values.



**FIGURE 2.4**  
A slider–crank mechanism.